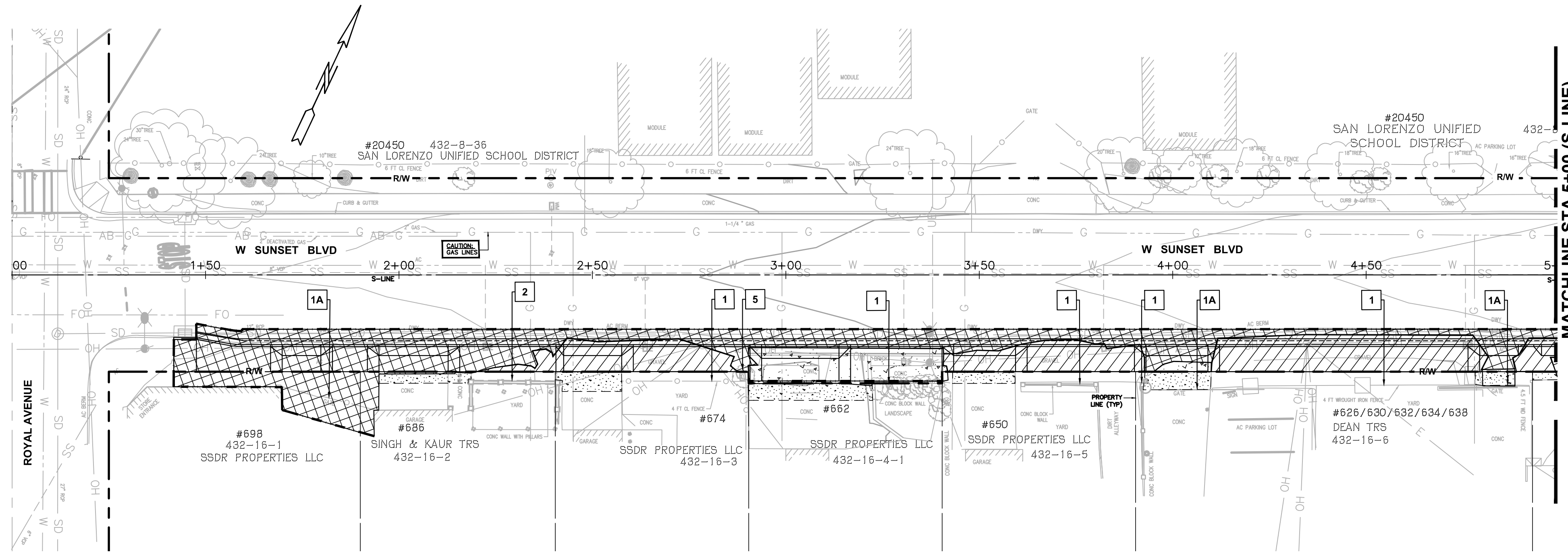


| | | | |
|--------------|-------|---------------|-------|
| REVIEWED BY: | DATE: | REVIEWED BY: | DATE: |
| CONSTRUCTION | | SURVEY | |
| MAINTENANCE | | TRAFFIC | |
| REAL ESTATE | | ENVIRONMENTAL | |

N:\3D\ROAD\R32129 W Sunset Blvd SR25\Sheets\16-17 Demolition Plan W Sunset-Addendum 2.dwg 4-05-23 02:53:08 PM bond



W SUNSET BLVD PLAN
SCALE: 1"=20'

KEY NOTES

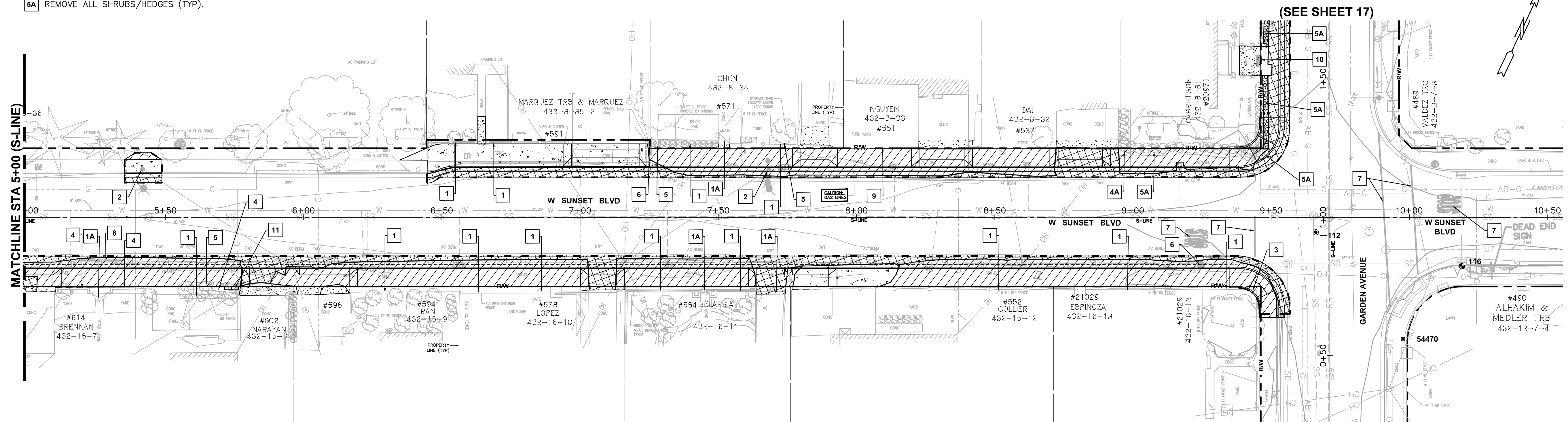
- | | | | |
|----|--|----|---|
| 1 | PROTECT WALL, FENCE AND/OR GATE | 6 | REMOVE, SALVAGE, AND RE-INSTALL SIGN AND POST |
| 1A | PROTECT FENCE AND/OR GATE. IF NECESSARY, ADJUST FENCE AND/OR GATE TO FG | 7 | REMOVE PAVEMENT MARKING(S) |
| 2 | REMOVE STREET LIGHT AND POLE (SEE NOTE 8) | 8 | REMOVE WOOD |
| 3 | RELOCATE WALL, FENCE (INCL POSTS AND FOUNDATIONS) AND/OR GATE BEHIND ROW (SEE NOTES 7, 8, AND 9) | 9 | PROTECT TURF AND WOODEN HEADER (TYP) |
| 4 | PROTECT PLANTER (TYP) | 10 | REMOVE, SALVAGE AND RE-INSTALL METAL ARCHED GARDEN ARBOR |
| 4A | PROTECT IN PLACE (BIRDS OF PARADISE) PLANTS/HEDGES | 11 | PROTECT PLANTER BOXES (TYP). RELOCATE BEHIND ROW IF NECESSARY |
| 5 | TRIM SHRUBS/HEDGES (TYP). REMOVE ONLY WHEN NECESSARY | | |
| 5A | REMOVE ALL SHRUBS/HEDGES (TYP). | | |

LEGEND

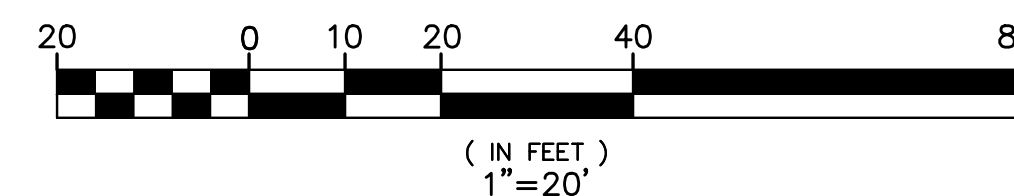
- | | |
|--|---|
| | REMOVE EXISTING GRAVEL/DIRT/LANDSCAPING |
| | REMOVE EXISTING ASPHALT CONCRETE PAVEMENT |
| | REMOVE EXISTING CONCRETE IMPROVEMENTS (ALL TYPES) |
| | REMOVE EXISTING PAVERS |
| | ASPHALT CONCRETE SAWCUT LIMIT LINE |

NOTES

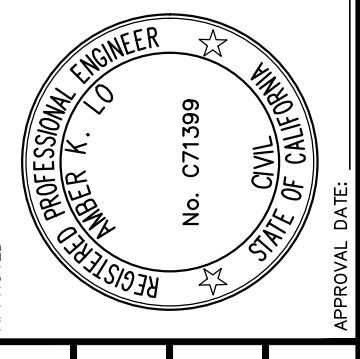
- PEDESTRIAN TRAVEL ALONG THE ROADWAYS MUST BE MAINTAINED AT ALL TIMES DURING CONSTRUCTION - SEE GENERAL NOTE 19, PLAN SHEET 3.
- DEMOLITION LIMITS SHOWN ARE APPROXIMATE. PRIVATE CONFORM LIMITS MAY NOT ALL BE SHOWN. ACTUAL DEMOLITION LIMITS TO BE VERIFIED IN THE FIELD BY THE ENGINEER PRIOR TO START OF WORK.
- PIPELINES AND UTILITIES MAY NOT BE ALL SHOWN. UTILITIES SHOWN ON THIS PLAN AND THE UTILITY PLAN ARE APPROXIMATE. CONTACT U.S.A. (800) 642-2444 FOR UTILITY LOCATING SERVICES 48 HOURS PRIOR TO DOING ANY WORK. PROTECT ALL EXISTING UTILITIES; REFER TO THE UTILITY PLAN FOR MORE INFORMATION.
- SAWCUT LINES ARE APPROXIMATE. AT ALL SIDEWALK SAWCUTS, CUT AT THE NEAREST SCOREMARK WHICH WILL PROVIDE ENOUGH AREA FOR CONSTRUCTION.
- COORDINATE WITH PROPERTY OWNERS ON ALL PRIVATE PROPERTY HARDSCAPE AND LANDSCAPE IMPROVEMENTS THAT ARE REMOVED. SALVAGE AND RETURN ALL REMOVED MATERIALS TO THE PROPERTY OWNER UPON REQUEST.
- SPRINKLERS MAY NOT BE ALL SHOWN. ANY EXISTING SPRINKLER SYSTEMS THAT ARE REMOVED OR DAMAGED SHALL BE REPLACED IN KIND.
- CONTRACTOR MUST NOT DEACTIVATE OR REMOVE EXISTING STREET LIGHT POLE UNTIL THE NEW TYPE 15 POLE AND FOUNDATION, AND STREET LIGHT ARE CONSTRUCTED AND ACTIVATED, RESPECTIVELY. THE CONTRACTOR SHALL ACTIVATE THE NEW STREET LIGHT ON THE SAME DAY THE EXISTING STREET LIGHT IS DEACTIVATED. CONTRACTOR SHALL REMOVE AND DISPOSE OLD POLE. CONTRACTOR MUST CONTACT THE COUNTY TRAFFIC OPERATIONS SUPERVISOR (510) 670-5537 AT LEAST THREE (3) WORKING DAYS BEFORE START OF WORK.
- REMOVE ONLY THE PORTION/SEGMENT OF FENCING AND/OR WALL NEEDED TO CONSTRUCT THE PROPOSED IMPROVEMENTS. THE REMAINING SEGMENT AND/OR WALL MUST BE PROTECTED IN PLACE.
- ALL FENCES, GATES, AND WALLS REMOVED TO FACILITATE CONSTRUCTION SHALL BE RE-INSTALLED BEFORE THE END OF EACH WORKSHIFT OR WHEN WORK IS NOT IN PROGRESS.
- CONTRACTOR MUST SALVAGE AND RE-USE REMOVED FENCE AND GATE MATERIALS WHEN POSSIBLE.
- SEE PLAN AND PROFILE FOR MORE INFORMATION
- SEE PAVING PLAN FOR AC CONFORM MILLING LIMITS
- SEE SPECIFICATIONS FOR ADDITIONAL DETAILS
- CAUTION: AT #20971 GARDEN AVENUE, THERE IS A 0.75" WHITE PLASTIC DUCT (BURIED APPROX. 3" DEEP) WITH WIRES TO LIGHT POLE NEXT TO SOUTHSIDE DRIVEWAY; CONSULT HOMEOWNER FOR MORE INFORMATION BEFORE START OF WORK.
- CAUTION: UNDERGROUND FACILITIES WITHIN PROPERTY OF #20450 WEST SUNSET BLVD. CONSULT SCHOOL DISTRICT FOR MORE INFORMATION BEFORE START OF WORK.



W SUNSET BLVD PLAN
SCALE: 1"=20'



| NO. | DESCRIPTION | BY | DATE | APPROVED |
|-----|-------------|----|------|----------|
| | | | | |
| | | | | |
| | | | | |
| | | | | |



| | | |
|----------------------|------|-------|
| APPROVAL RECOMMENDED | DATE | SCALE |
| | | |
| DESIGNED | DATE | SCALE |
| | | |
| CHECKED | DATE | SCALE |
| | | |

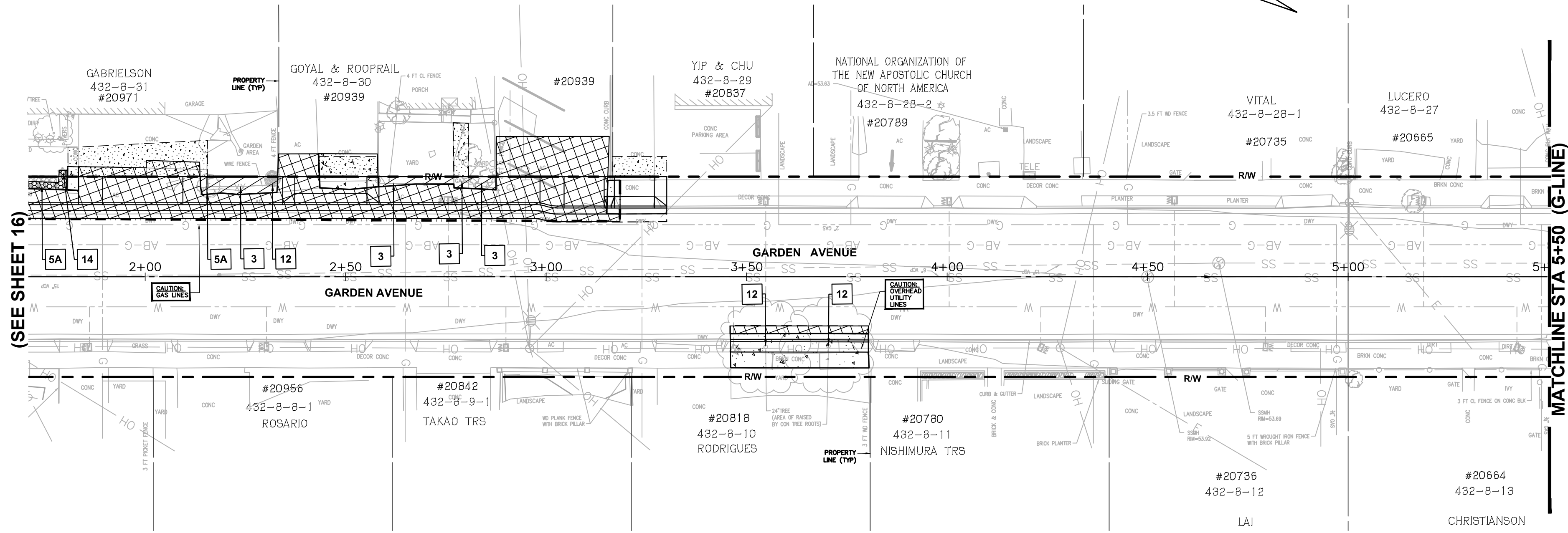
COUNTY OF ALAMEDA ☆ **PUBLIC WORKS AGENCY**
DRAWN: AMBER K. LO
DESIGNED: AMBER K. LO
CHECKED: AMBER K. LO

SIDEWALK IMPROVEMENTS ON WEST SUNSET BLVD. - FROM ROYAL AVE. TO GARDEN AVE. & GARDEN AVE. - FROM W. SUNSET BLVD. BARTLETT AVE.
DEMOLITION PLAN - W SUNSET BLVD

| | |
|-------------------|----------|
| WORK ORDER NO. | R32129 |
| SPECIFICATION NO. | 2399 |
| SHEET NO. | 16 OF 29 |
| FILE NO. | U-502-1 |

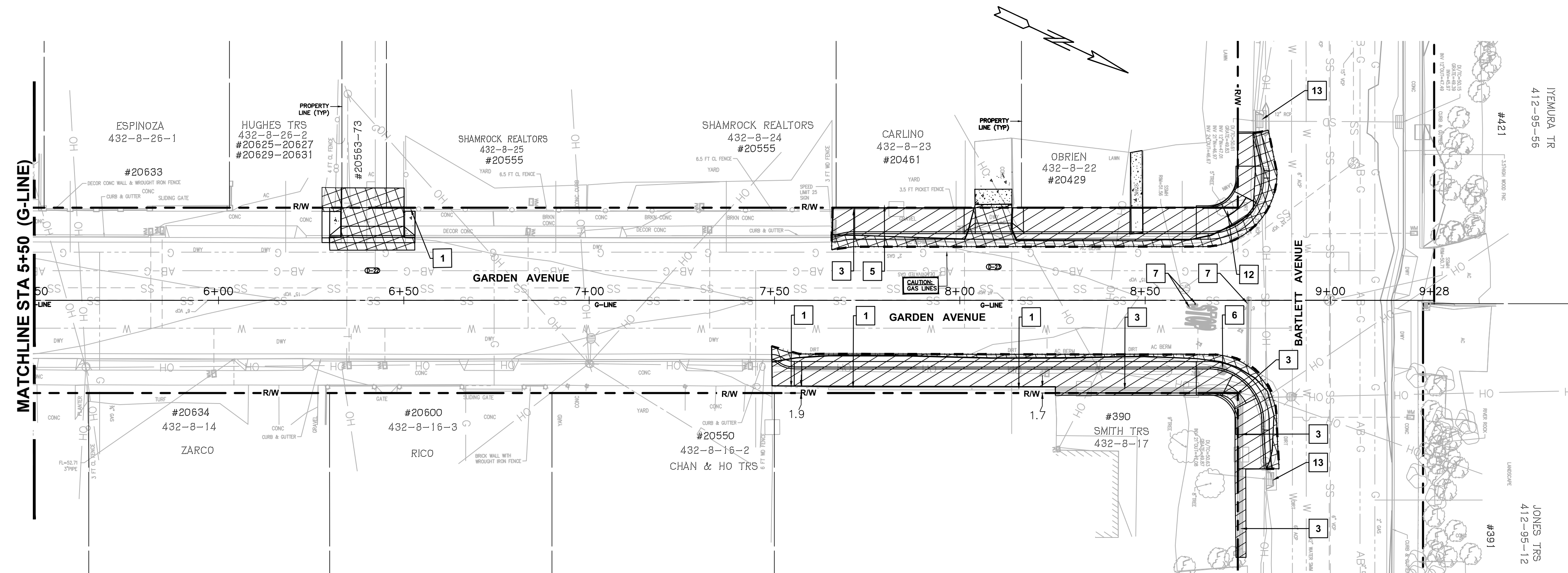
| | | | |
|--------------|-------|---------------|-------|
| REVIEWED BY: | DATE: | REVIEWED BY: | DATE: |
| CONSTRUCTION | | SURVEY | |
| MAINTENANCE | | TRAFFIC | |
| REAL ESTATE | | ENVIRONMENTAL | |

N:\3D\ROAD\32129 W Sunset Blvd SR25\Sheets\16-17 Demolition Plan W Sunset-Addendum 2.dwg 4-05-23 02:53:33 PM bond



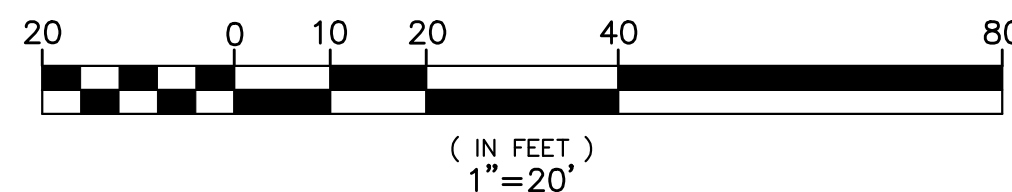
GARDEN AVE PLAN

SCALE: 1"=20'



GARDEN AVE PLAN

SCALE: 1"=20'



NOTES

- PEDESTRIAN TRAVEL ALONG THE ROADWAYS MUST BE MAINTAINED AT ALL TIMES DURING CONSTRUCTION - SEE GENERAL NOTE 19, PLAN SHEET 3.
- DEMOLITION LIMITS SHOWN ARE APPROXIMATE. PRIVATE CONFORM LIMITS MAY NOT ALL BE SHOWN. ACTUAL DEMOLITION LIMITS TO BE VERIFIED IN THE FIELD BY THE ENGINEER PRIOR TO START OF WORK.
- PIPELINES AND UTILITIES MAY NOT BE ALL SHOWN. UTILITIES SHOWN ON THIS PLAN AND THE UTILITY PLAN ARE APPROXIMATE. CONTACT U.S.A. (800) 642-2444 FOR UTILITY LOCATING SERVICES 48 HOURS PRIOR TO DOING ANY WORK. PROTECT ALL EXISTING UTILITIES; REFER TO THE UTILITY PLAN FOR MORE INFORMATION.
- SAWCUT LINES ARE APPROXIMATE. AT ALL SIDEWALK SAWCUTS, CUT AT THE NEAREST SCOREMARK WHICH WILL PROVIDE ENOUGH AREA FOR CONSTRUCTION.
- COORDINATE WITH PROPERTY OWNERS ON ALL PRIVATE PROPERTY HARDSCAPE AND LANDSCAPE IMPROVEMENTS THAT ARE REMOVED. SALVAGE AND RETURN ALL REMOVED MATERIALS TO THE PROPERTY OWNER UPON REQUEST.
- SPRINKLERS MAY NOT BE ALL SHOWN. ANY EXISTING SPRINKLER SYSTEMS THAT ARE REMOVED OR DAMAGED SHALL BE REPLACED IN KIND..
- CONTRACTOR MUST NOT DEACTIVATE OR REMOVE EXISTING STREET LIGHT POLE UNTIL THE NEW TYPE 15 POLE AND FOUNDATION, AND STREET LIGHT ARE CONSTRUCTED AND ACTIVATED, RESPECTIVELY. THE CONTRACTOR SHALL ACTIVATE THE NEW STREET LIGHT ON THE SAME DAY THE EXISTING STREET LIGHT IS DEACTIVATED. CONTRACTOR SHALL REMOVE AND DISPOSE OLD POLE. CONTRACTOR MUST CONTACT THE COUNTY TRAFFIC OPERATIONS SUPERVISOR (510) 670-5537 AT LEAST THREE (3) WORKING DAYS BEFORE START OF WORK.
- REMOVE ONLY THE PORTION/SEGMENT OF FENCING AND/OR WALL NEEDED TO CONSTRUCT THE PROPOSED IMPROVEMENTS. THE REMAINING SEGMENT AND/OR WALL MUST BE PROTECTED IN PLACE.
- ALL FENCES, GATES, AND WALLS REMOVED TO FACILITATE CONSTRUCTION SHALL BE RE-INSTALLED BEFORE THE END OF EACH WORKSHIFT OR WHEN WORK IS NOT IN PROGRESS.
- CONTRACTOR MUST SALVAGE AND RE-USE REMOVED FENCE AND GATE MATERIALS WHEN POSSIBLE.
- SEE PLAN AND PROFILE FOR MORE INFORMATION
- SEE PAVING PLAN FOR AC CONFORM MILLING LIMITS.
- SEE SPECIFICATIONS FOR ADDITIONAL DETAILS.
- CAUTION: AT #20971 GARDEN AVENUE, THERE IS A 0.75" WHITE PLASTIC DUCT (BURIED APPROX. 3" DEEP) WITH WIRES TO LIGHT POLE NEXT TO SOUTHSIDE DRIVEWAY; CONSULT HOMEOWNER FOR MORE INFORMATION BEFORE START OF WORK.

LEGEND

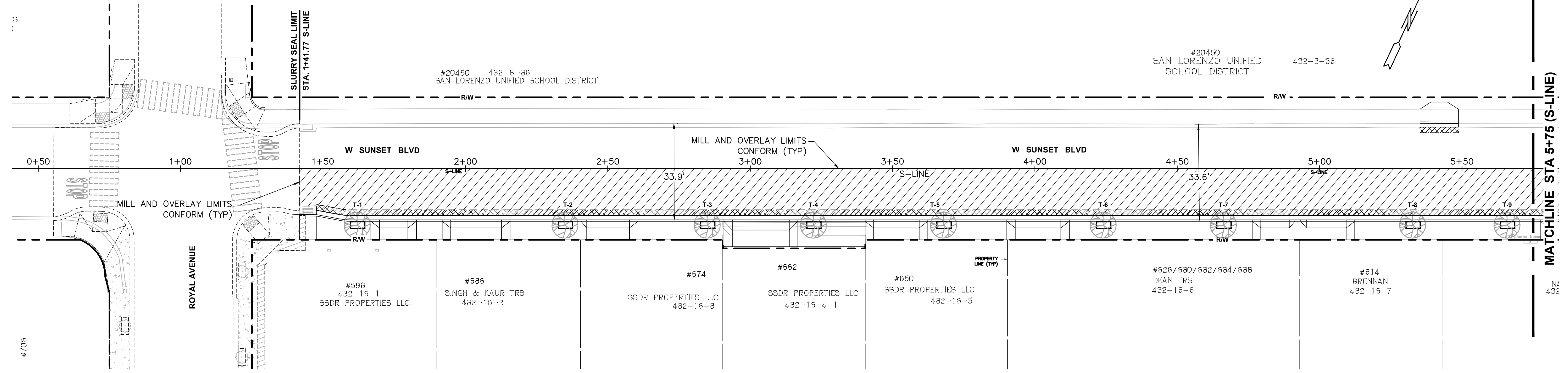
- REMOVE EXISTING GRAVEL/DIRT/LANDSCAPING
- REMOVE EXISTING ASPHALT CONCRETE PAVEMENT
- REMOVE EXISTING CONCRETE IMPROVEMENTS (ALL TYPES)
- REMOVE EXISTING PAVERS
- ASPHALT CONCRETE SAWCUT LIMIT LINE

KEY NOTES

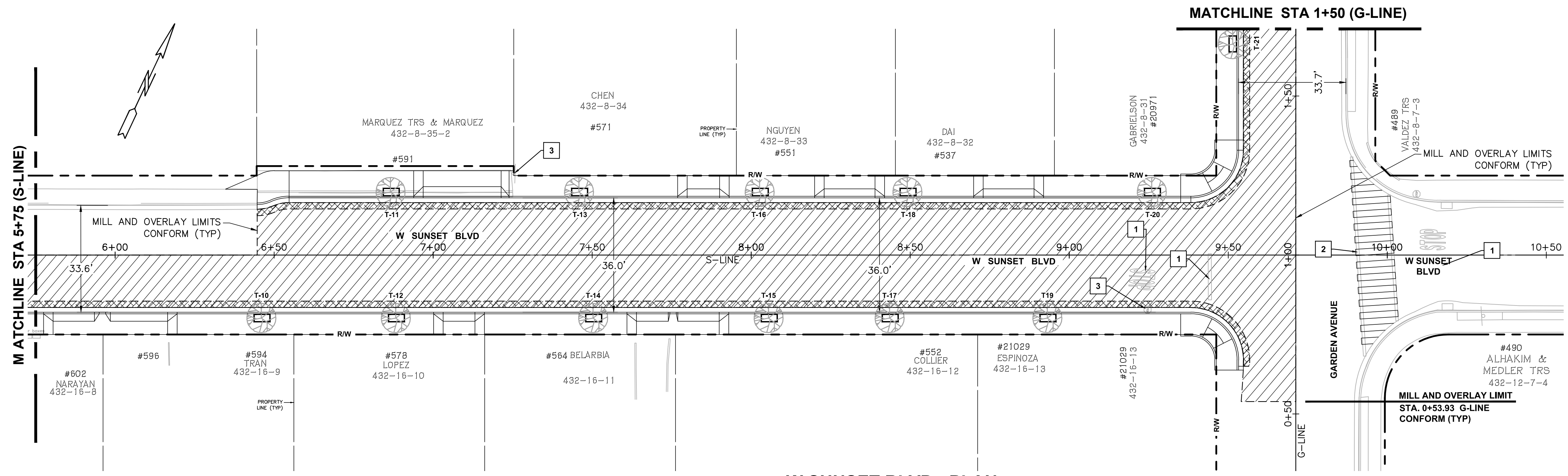
- PROTECT WALL, FENCE AND/OR GATE
- PROTECT FENCE AND/OR GATE. IF NECESSARY, ADJUST FENCE AND/OR GATE TO FG
- REMOVE STREET LIGHT AND POLE (SEE NOTE 8)
- RELOCATE WALL, FENCE (INCL. POSTS AND FOUNDATIONS) AND/OR GATE BEHIND ROW (SEE NOTES 7, 8, AND 9)
- PROTECT PLANTER (TYP)
- TRIM SHRUBS/HEDGES (TYP). REMOVE ONLY WHEN NECESSARY
- REMOVE ALL SHRUBS/HEDGES (TYP).
- REMOVE, SALVAGE, AND RE-INSTALL SIGN AND POST
- REMOVE PAVEMENT MARKING AND/OR PAVEMENT MARKER
- REMOVE WOOD
- PROTECT TURF AND WOODEN HEADER (TYP)
- REMOVE, SALVAGE AND RELOCATE METAL ARCHED GARDEN ARBOR
- REMOVE SIGNS AND POSTS; SALVAGE SIGNS AND RE-INSTALL ON NEW BREAKAWAY POSTS
- REMOVE TREE STUMP AND ROOTS
- PROTECT INLET
- PROTECT IN PLACE DECORATIVE LIGHT POLE

| | | | |
|---|--|---|---|
| <p>COUNTY OF ALAMEDA</p> <p>SIDWALK IMPROVEMENTS ON WEST SUNSET BLVD. - FROM ROYAL AVE. TO GARDEN AVE. & GARDEN AVE. - FROM W. SUNSET BLVD. BARTLETT AVE.</p> <p>DEMOLITION PLAN - GARDEN AVENUE</p> | <p>APPROVAL: RECOMMENDED</p> <p>APPROVAL: RECOMMENDED</p> | <p>DATE: FEB 2023</p> <p>SCALE: 1"=20'</p> | <p>NO.</p> <p>DESCRIPTION</p> <p>BY</p> <p>DATE</p> |
| | <p>WORK ORDER NO. R32129</p> <p>SPECIFICATION NO. 2399</p> <p>SHEET NO. 17 OF 29</p> <p>FILE NO. U-502-1</p> | <p>APPROVED</p> <p>REGISTERED PROFESSIONAL ENGINEER</p> <p>AMBER K. LO</p> <p>No. C71399</p> <p>STATE OF CALIFORNIA</p> <p>APPROVAL DATE:</p> | <p>REVISIONS</p> |

| | | |
|--------------|---------------|---------|
| CONSTRUCTION | REVIEWED BY: | DATE: |
| MAINTENANCE | SURVEY | TRAFFIC |
| REAL ESTATE | ENVIRONMENTAL | |



W SUNSET BLVD - PLAN
SCALE: 1"=20'



W SUNSET BLVD - PLAN
SCALE: 1"=20'

GENERAL NOTES

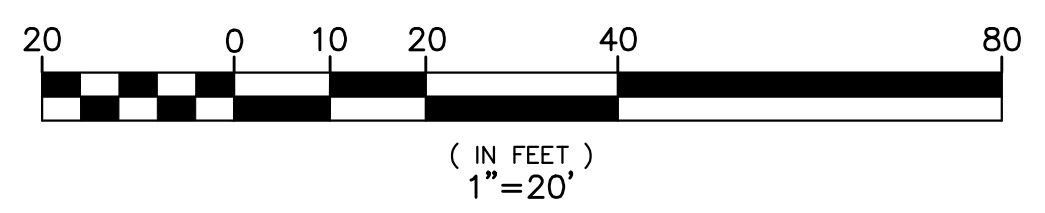
- ROADWAY AC CONFORM LIMITS SHOWN ARE APPROXIMATE. ACTUAL LIMITS TO BE CONFIRMED BY THE ENGINEER. CONSTRUCT ROADWAY ASPHALT CONFORM AS SHOWN ON DETAIL 3 ON SHEET 3 AND AS DIRECTED BY THE ENGINEER.
- CONTRACTOR SHALL MARKED TREE WELL LOCATIONS ON-SITE. ENGINEER TO CONFIRM LOCATIONS PRIOR TO ITS CONSTRUCTION.
- SLURRY SEAL LIMITS (LIP OF GUTTER TO LIP OF GUTTER):
 - (W. SUNSET BLVD.): STA. 1+40 TO 10+30 (S-LINE)
 - (GARDEN AVE.): STA. 0+50 TO 9+15 (G-LINE);
 - (BARTLETT AVE.): 50'+/- OFFSET FROM G-LINE IN BOTH DIRECTIONS.

KEY NOTES

- REMOVE AND REPLACE EX PAVEMENT MARKING(S)
- REMOVE EX CROSSWALK PAVEMENT MARKING AND REPLACE WITH WHITE CONTINENTAL CROSSWALK (SEE DETAIL ON NEXT SHEET)
- REMOVE, SALVAGE, AND RE-INSTALL SIGN(S) AND POST

LEGEND

- ROADWAY AC CONFORM (MILL AND OVERLAY)
- AC PLUG (SEE PLAN SHEET 3 FOR DETAILS)
- TREE WELL (SEE NOTE 2) AND TREE (CHINESE FRINGE - CHIONANTHUS RETSUS)
- T #** TREE NUMBER (SEE TREE TABLE ON THIS SHEET)



TREE TABLE

| TREE NO. ^A | ALIGNMENT | STA* | ADDRESS |
|-----------------------|-----------|---------|---------|
| T-1 | S-LINE | 1+62.16 | 698 |
| T-2 | S-LINE | 2+XX | 686 |
| T-3 | S-LINE | 2+85.12 | 674 |
| T-4 | S-LINE | 3+22.39 | 662 |
| T-5 | S-LINE | 3+65.09 | 650 |
| T-6 | S-LINE | 4+24.15 | 626 |
| T-7 | S-LINE | 4+66.39 | 638 |
| T-8 | S-LINE | 5+32.82 | 614 |
| T-9 | S-LINE | 5+66.03 | 602 |
| T-10 | S-LINE | 6+46.19 | 594 |
| T-11 | S-LINE | 6+86.81 | 591 |
| T-12 | S-LINE | 6+88.45 | 578 |
| T-13 | S-LINE | 7+46.05 | 571 |
| T-14 | S-LINE | 7+50.50 | 564 |
| T-15 | S-LINE | 8+05.67 | 552 |
| T-16 | S-LINE | 8+18.69 | 551 |
| T-17 | S-LINE | 8+43.71 | 552 |
| T-18 | S-LINE | 8+49.31 | 537 |
| T-19 | S-LINE | 8+93.31 | 21029 |
| T-20 | S-LINE | 9+26.15 | 20971 |
| T-21 | G-LINE | 1+66.43 | 20971 |
| T-22 | G-LINE | 2+68.50 | 20939 |
| T-23 | G-LINE | 3+62.48 | 20818 |
| T-24 | G-LINE | 7+77.17 | 20461 |
| T-25 | G-LINE | 8+38.36 | 20429 |

^ TREE WELL LABELED ON RDWY AC CONFORM PLANS
* STATIONS CORRESPOND TO CENTER OF TREE WELL
** SEE SHEET 5 FOR DETAILS

N:\3D\ROAD\32129 W Sunset Blvd SR25\Sheets\28-29-Plan W Sunset Addendum 2.dwg 4-05-23 02:49:01 PM bond

APPROVED: AMBER K. LO

REGISTERED PROFESSIONAL ENGINEER

No. CT1399

STATE OF CALIFORNIA

APPROVAL DATE:

APPROVED: AMBER K. LO

REGISTERED PROFESSIONAL ENGINEER

No. CT1399

STATE OF CALIFORNIA

APPROVAL DATE:

APPROVAL RECOMMENDED

DESIGNED

CHECKED

APPROVAL RECOMMENDED

DESIGNED

CHECKED

DATE

SCALE

AS SHOWN

WORK ORDER NO.

R32129

SPECIFICATION NO.

2399

SHEET NO.

28 OF 29

FILE NO.

U-502-1

SLURRY SEAL LIMITS (ADDENDUM 2)

BN

04/05/2023

DATE

BY

APPROVAL

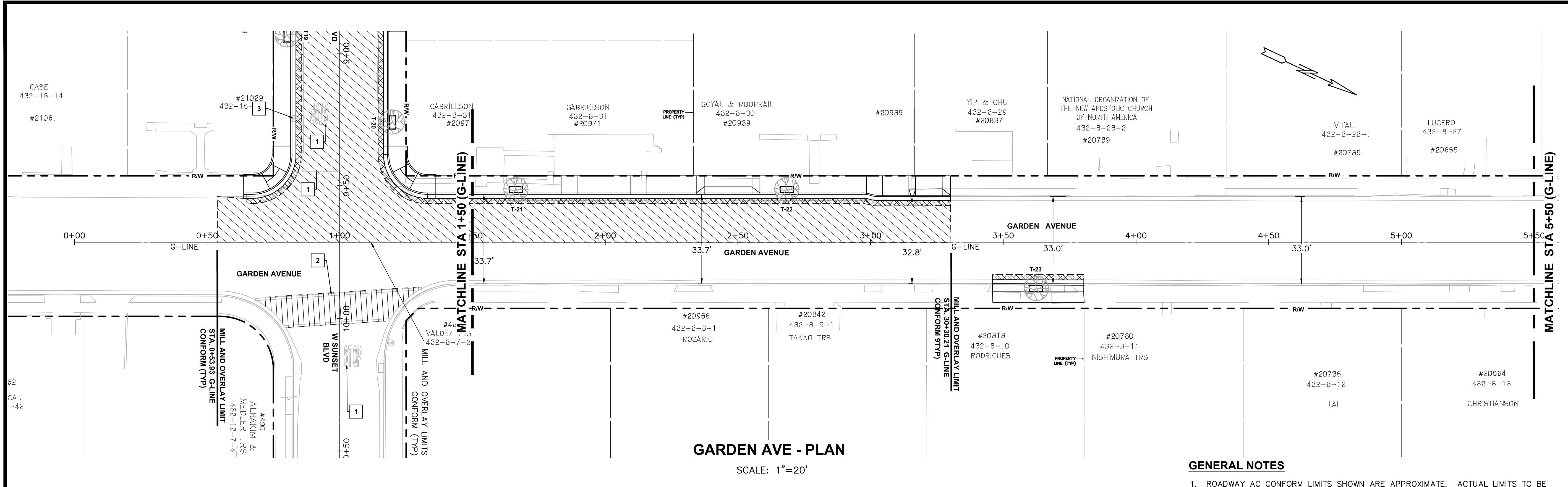
REVISIONS

NO.

DESCRIPTION

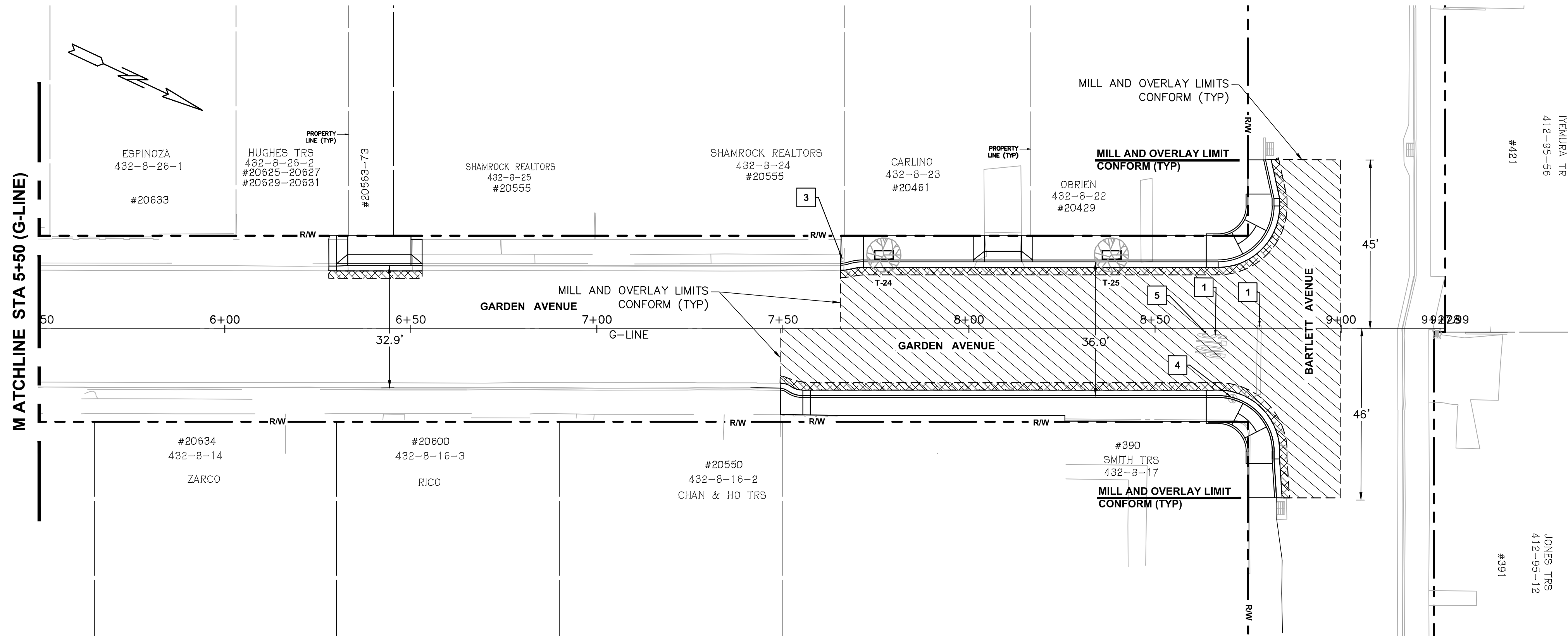
| | | | |
|--------------|-------|---------------|-------|
| REVIEWED BY: | DATE: | REVIEWED BY: | DATE: |
| CONSTRUCTION | | SURVEY | |
| MAINTENANCE | | TRAFFIC | |
| REAL ESTATE | | ENVIRONMENTAL | |

N:\3D\ROAD\32129 W Sunset Blvd SR25\Sheets\28-29-Plan W Sunset Addendum 2.dwg 4-05-23 02:49:38 PM bond



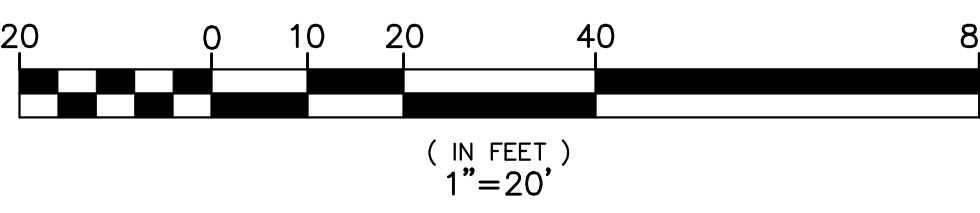
GARDEN AVE - PLAN

SCALE: 1"=20'



GARDEN AVE - PLAN

SCALE: 1"=20'



GENERAL NOTES

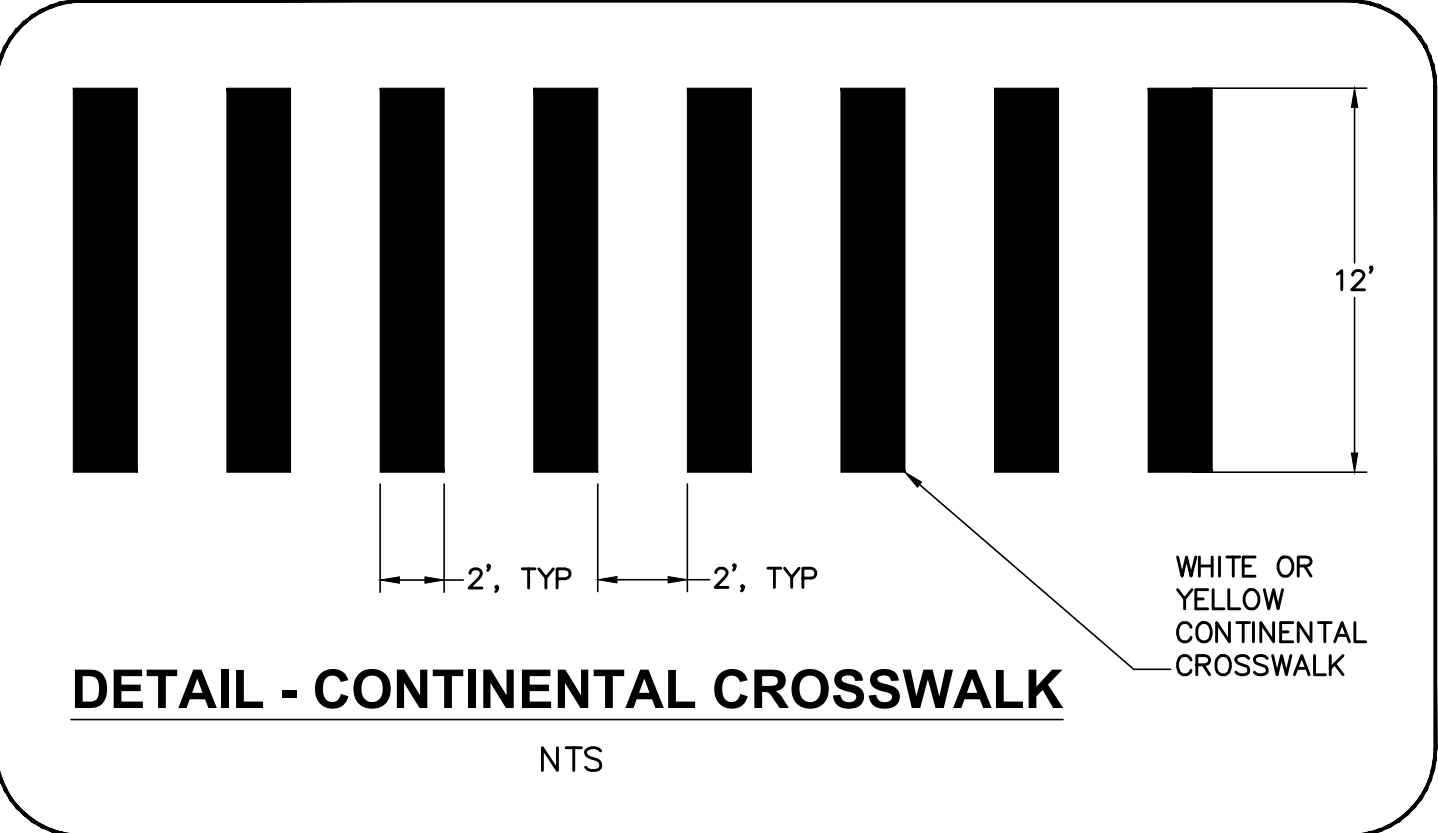
- ROADWAY AC CONFORM LIMITS SHOWN ARE APPROXIMATE. ACTUAL LIMITS TO BE CONFIRMED BY THE ENGINEER. CONSTRUCT ROADWAY ASPHALT CONFORM AS SHOWN ON DETAIL 3 ON SHEET 3 AND AS DIRECTED BY THE ENGINEER.
- CONTRACTOR SHALL MARKED TREE WELL LOCATIONS ON-SITE. ENGINEER TO CONFIRM LOCATIONS PRIOR TO ITS CONSTRUCTION.
- SLURRY SEAL LIMITS (LIP OF GUTTER TO LIP OF GUTTER):
 - (W. SUNSET BLVD.): STA. 1+40 TO 10+30 (S-LINE)
 - (GARDEN AVE.): STA. 0+50 TO 9+15 (G-LINE);
 - (BARTLETT AVE.): 50'+/- OFFSET FROM G-LINE IN BOTH DIRECTIONS.

KEY NOTES

- REMOVE AND REPLACE EX PAVEMENT MARKING(S)
- REMOVE EX CROSSWALK PAVEMENT MARKING AND REPLACE WITH WHITE CONTINENTAL CROSSWALK (SEE DETAIL ON THIS SHEET)
- REMOVE, SALVAGE, AND RE-INSTALL SIGN(S) AND POST
- REMOVE SIGNS AND POSTS; SALVAGE SIGNS AND RE-INSTALL ON NEW BREAKAWAY POST
- REMOVE AND INSTALL BLUE PAVEMENT MARKER IN-LINE WITH FIRE HYDRANT

LEGEND

- ROADWAY AC CONFORM (MILL AND OVERLAY)
- AC PLUG (SEE PLAN SHEET 3 FOR DETAILS)
- TREE WELL (SEE NOTE 2) AND TREE (CHINESE FRINGE - CHIONANTHUS RETSUS)
- T #** TREE NUMBER (SEE TREE TABLE ON SHEET 28)



| | | | | | | |
|--|---------------------|---------------------------------|---------------------------------|---------------------------------------|------------|----------|
| APPROVED | | | | APPROVAL DATE: | | |
| COUNTY OF ALAMEDA | | PUBLIC WORKS AGENCY | | AS SHOWN SCALE DATE FEB 2023 | | |
| DRAWN BOND NG | DESIGNED BOND NG | APPROVAL RECOMMENDED BOND NG | APPROVAL RECOMMENDED BOND NG | CHECKED BOND NG | | |
| SIDEWALK IMPROVEMENTS ON WEST SUNSET BLVD. - FROM ROYAL AVE. TO GARDEN AVE. & GARDEN AVE. - FROM W. SUNSET BLVD. TO BARTLETT AVE. | | | | | | |
| PAVING, SIGNING AND STRIPING, TREE PLANTING PLAN | | | | | | |
| WORK ORDER NO. | | R32129 | | | | |
| SPECIFICATION NO. | | 2399 | | | | |
| SHEET NO. | | 29 OF 29 | | | | |
| FILE NO. | | U-502-1 | | | | |
| REVISIONS | | NO. | DESCRIPTION | BY | DATE | APPROVED |
| | | | SLURRY SEAL LIMITS (ADDENDUM 2) | BN | 04/05/2023 | BN |