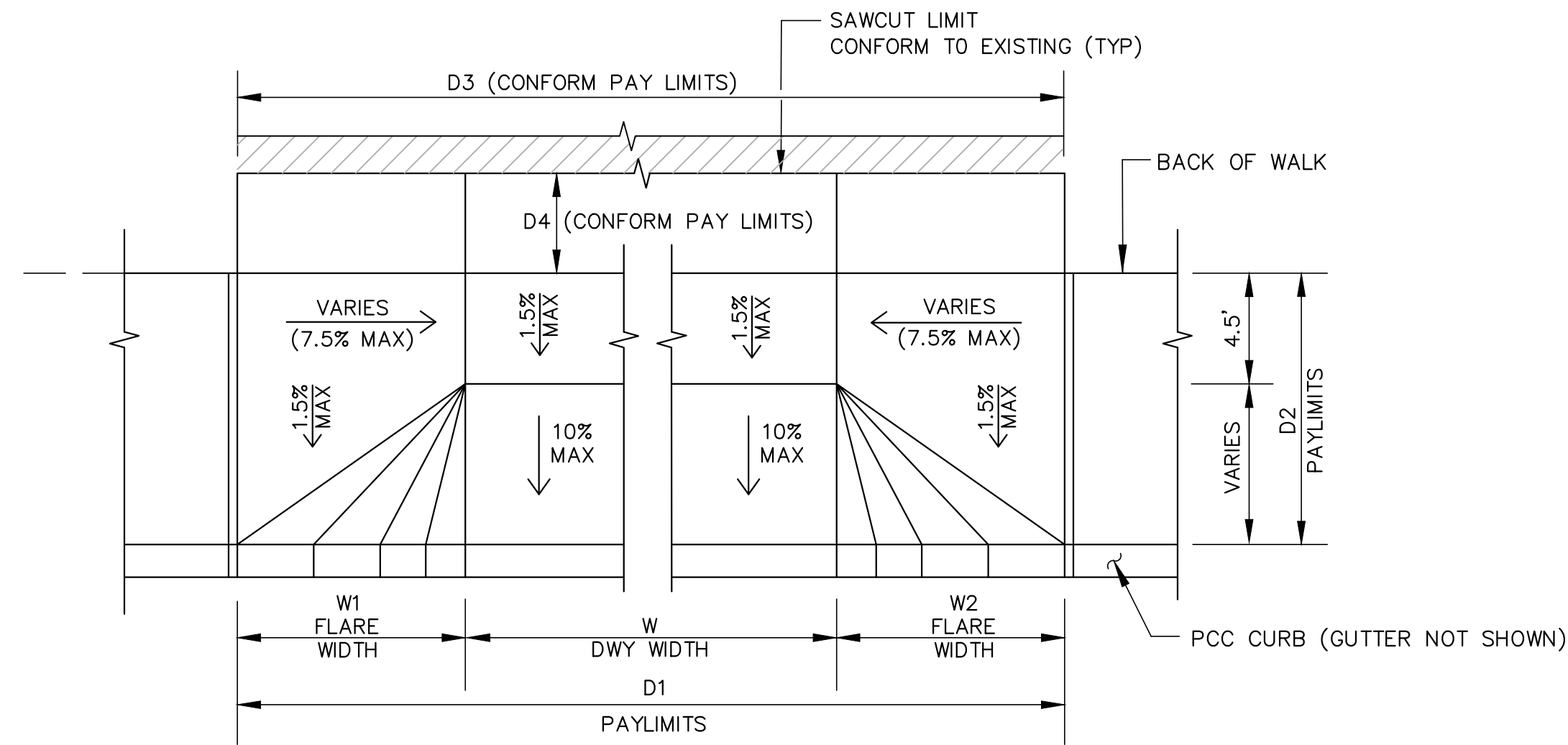
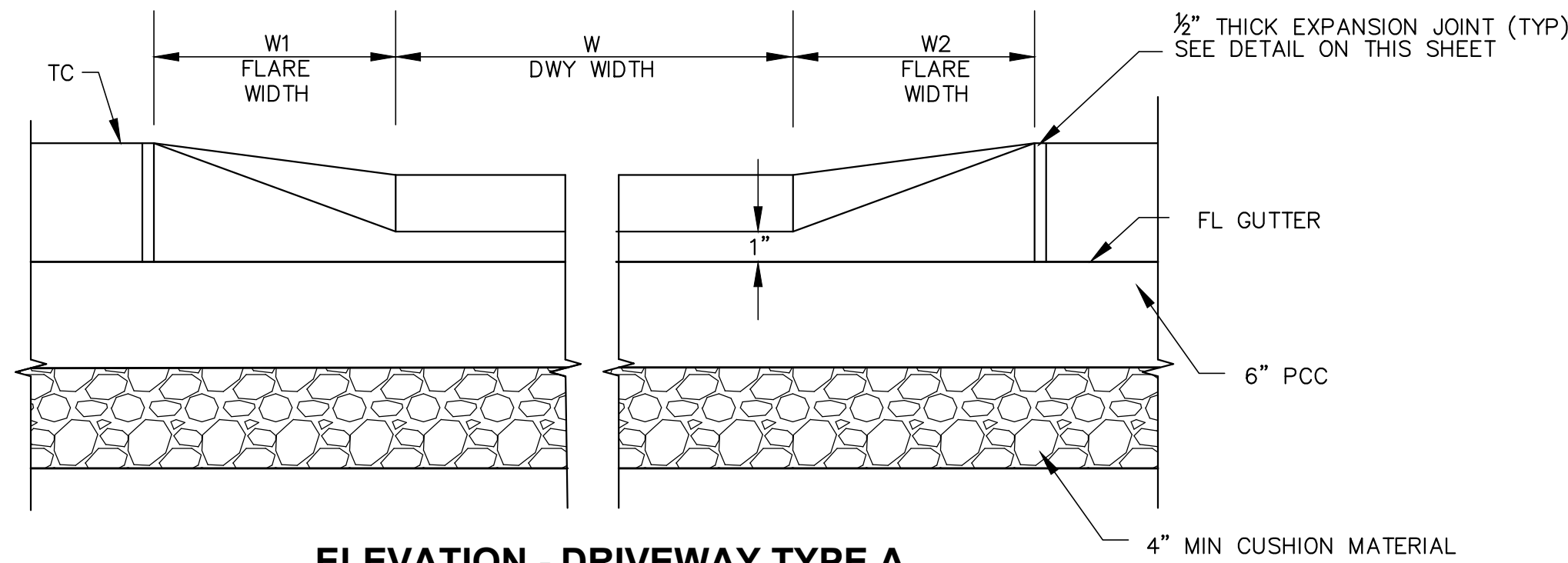


REVIEWED BY:	DATE:	REVIEWED BY:	DATE:
CONSTRUCTION		SURVEY	
MAINTENANCE		TRAFFIC	
REAL ESTATE		ENVIRONMENTAL	

N:\30\ROAD\32131 - Redwood Rd Sidewalk\Sheets\00-05 Title Pollution Notes Details - Redwood.dwg 2-27-22 12:25:11 PM bond



PLAN - DRIVEWAY TYPE A

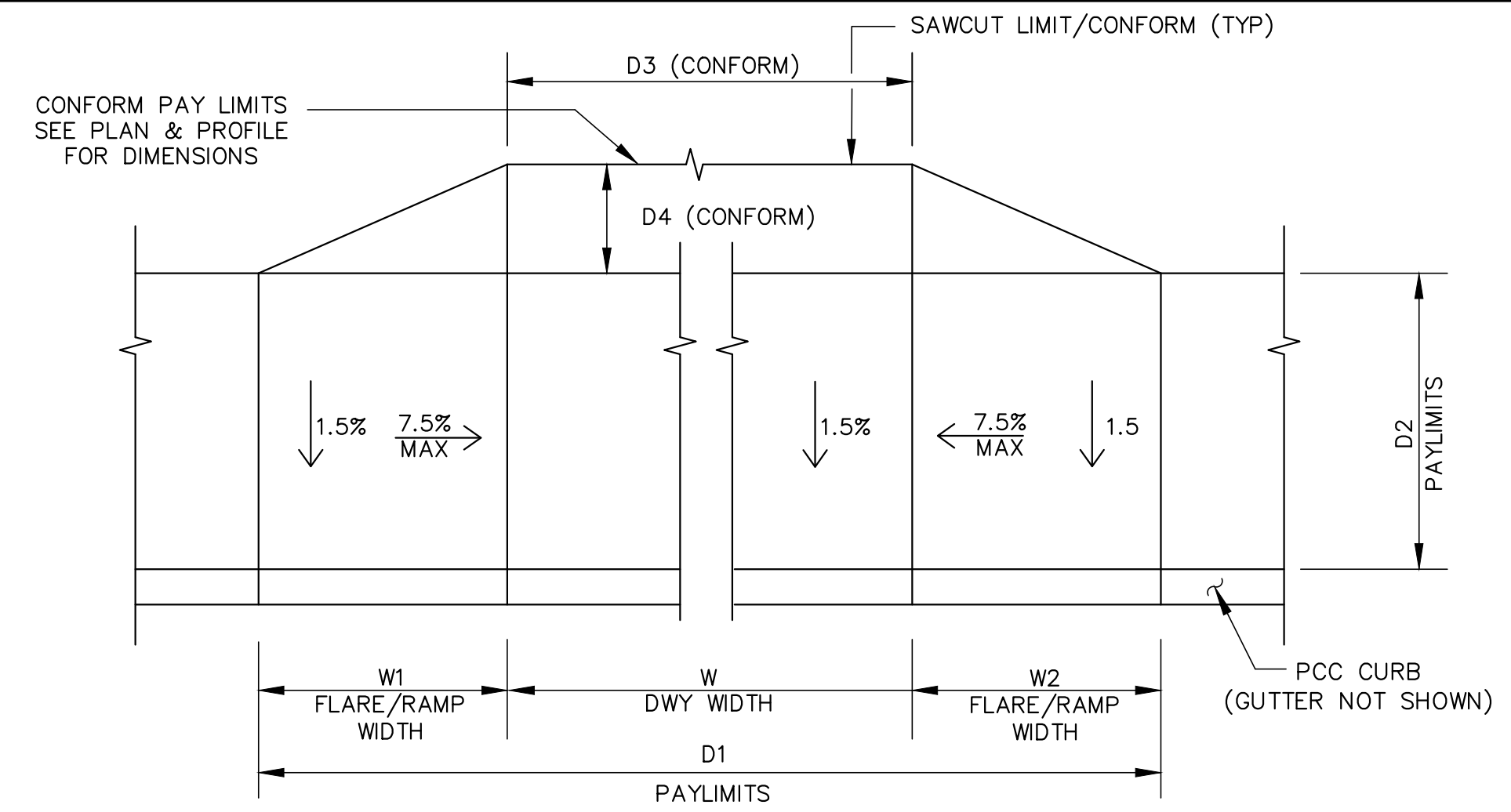


ELEVATION - DRIVEWAY TYPE A

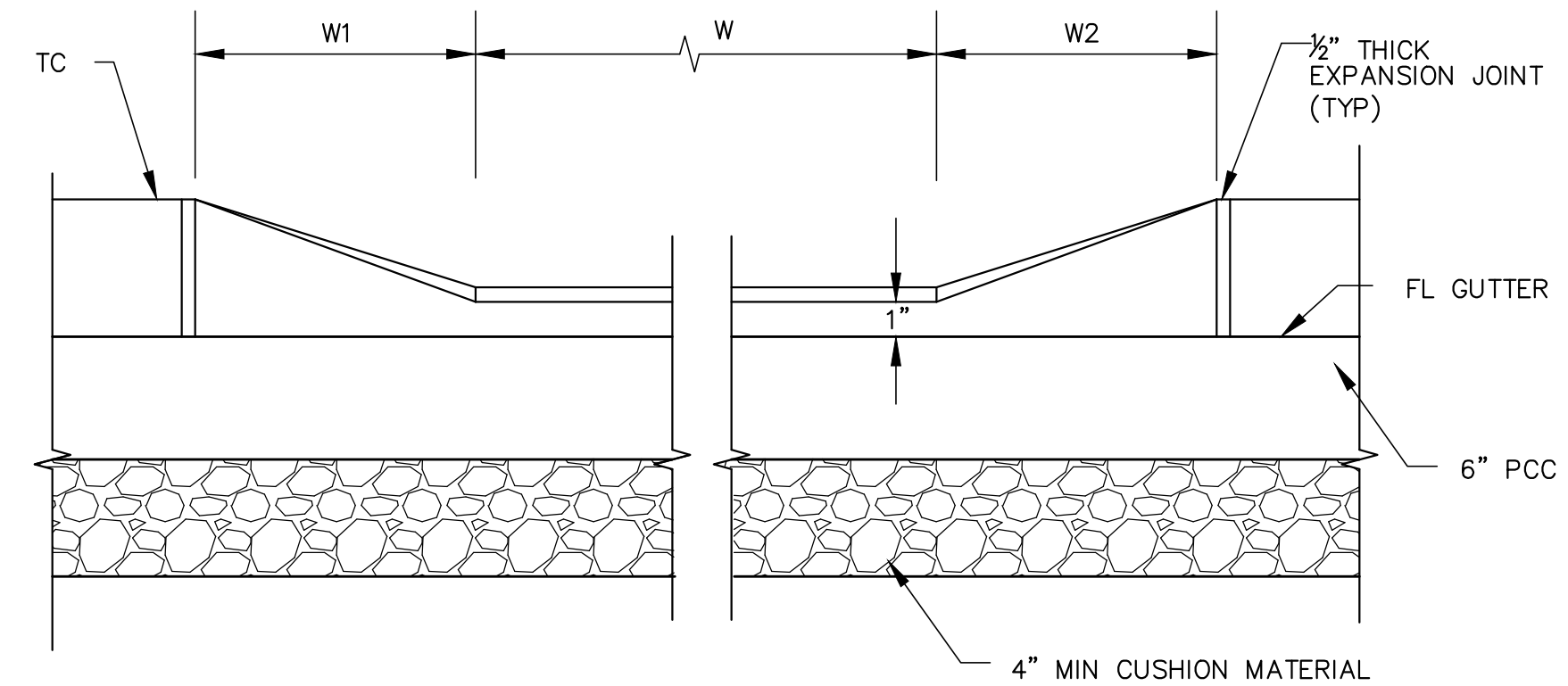
DRIVEWAY DETAIL

NTS

1



PLAN-DRIVEWAY TYPE B

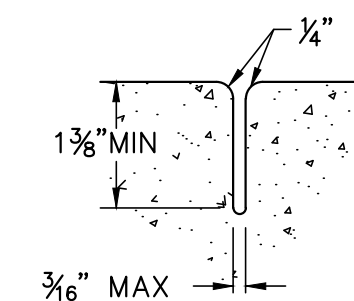


ELEVATION-DRIVEWAY TYPE B

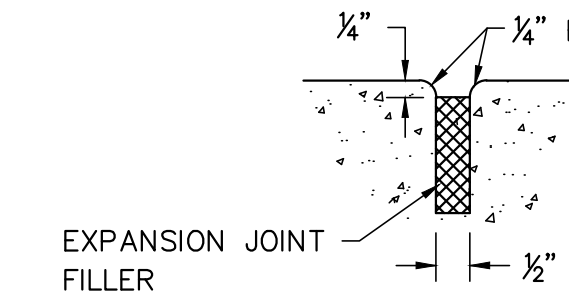
DRIVEWAY DETAIL

NTS

2



WEAKENED PLANE JOINT



EXPANSION JOINT

JOINT DETAILS

NTS

3

PCC DRIVEWAY IMPROVEMENTS TABLE - REDWOOD ROAD													
SITE NO.	DWY NO. ^A	ALIGNMENT	STA*	DWY TYPE	W1	W	W2	D1	D2	D3** CONFORM	D4** CONFORM	CONFORM MATERIAL***	ADDRESS
1	D-1	R-LINE	7+99.91	A	1.7	10.0	3.0	14.7	7.5	11.5	5.0	AC	20235
2	D-2	R-LINE	12+07.56	A	1.5	12.0	1.6	15.1	7.5	13.0	3.0	AC	20112
2	D-3	R-LINE	12+67.42	A	2.1	10.0	3.0	15.1	7.5	-	-	-	20096 & 20098
5	D-4	R-LINE	26+37.08	A	2.1	18.0	3.0	23.1	7.5	21.1	5.0	AC	19693
6	D-5	R-LINE	30+44.18	A	3.0	14.0	2.0	19.0	7.6	14.0	11.5	PCC	19502 & 19506
6	D-6	R-LINE	31+12.00	A	1.5	10.0	3.0	14.5	7.5	11.5	7.9	DECORATIVE CONCRETE	19482
6	D-7	R-LINE	31+40.41	A	3.0	15.0	3.0	21.0	7.6	24.5	11.0	PCC	19462
6	D-8	R-LINE	32+20.09	A	3.0	20.0	3.0	26.0	7.6	25.0	5.0	AC	19458
8	D-9	R-LINE	43+51.57	A	3.0	12.5	3.0	18.5	6.7	12.5	5.0	PCC	4180
10	D-10	R-LINE	55+83.23	A	3.0	12.0	3.0	18.0	7.5	0.0	0.0	PCC	18374
11	D-11	R-LINE	67+72.15	A	3.0	9.5	3.0	15.5	7.3	12.3	5.0	AC	17956
11	D-12	R-LINE	68+25.53	A	3.0	14.0	3.0	20.0	7.5	16.2	3.0-3.5	PCC	17944
14	D-13	R-LINE	78+91.72	B	8.0	14.0	6.0	26.0	5.5	23.7	30.3	PCC	17485
14	D-14	R-LINE	80+03.15	B	6.0	19.0	3.0	28.0	5.5	19.6	15.7	DECORATIVE BRICK/PCC	17479
14	D-15	R-LINE	80+30.37	B	3.0	12.0	6.0	21.0	5.5	12.8	7.0	AC	17465
14	D-16	R-LINE	80+93.26	B	6.0	16.0	8.0	30.0 28.0	5.5	24.5	10.2	PCC	17461
14	D-17	R-LINE	81+55.10	B	6.0	12.0	6.0	24.0	5.5	15.4	7.3	AC	17447

^A DRIVEWAYS LABELED ON IMPROVEMENT PLANS

* STATIONS CORRESPOND TO CENTER OF DRIVEWAY AT TOP OF CURB (FACE)

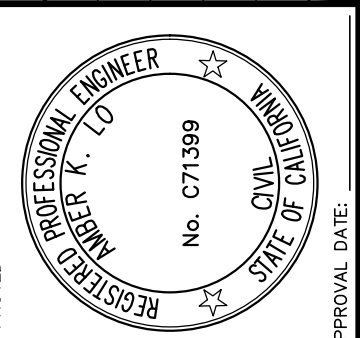
** ACTUAL CONFORM LIMITS TO BE CONFIRMED IN THE FIELD BY THE ENGINEER PRIOR TO CONSTRUCTION

*** SEE SHEET 5 FOR CONFORM DETAILS

GENERAL NOTES:

- WEAKENED PLANE JOINTS REQUIRED ON CENTERLINE FOR DRIVEWAYS WITH WIDTHS (W) 12' TO 20' WIDE.
- PLACE SCORE MARKS AT 1/4 POINTS ON DRIVEWAYS WITH WIDTHS (W) 12' TO 20' WIDE.
- DRIVEWAYS, GROOVED BORDERS, AND RAMPS SHALL HAVE A THICKNESS OF 6" P.C.C. OVER 4" CUSHION MATERIAL AND SHALL BE POURED MONOLITHICALLY WITH CURB & GUTTER.
- IF THE EXISTING ON-SITE IMPROVEMENTS DO NOT MATCH THE GRADE AT THE REAR OF THE NEW DRIVEWAY, SUFFICIENT EXISTING IMPROVEMENTS SHALL BE RECONSTRUCTED TO PRODUCE A SMOOTH, USABLE SURFACE WITH A CHANGE IN GRADE NOT EXCEEDING 10%.
- ON-SITE DRIVEWAY SHALL CONFORM TO THE BACK OF NEW DRIVEWAY.
- ALL NATIVE MATERIAL BELOW THE CUSHION MATERIAL, CLASS II AB, AND EX AB, SHALL BE COMPACTED TO 95% RELATIVE COMPACTION.

NO.	DESCRIPTION	BY	DATE	B NG	APPV/D



APPROVAL RECOMMENDED	DATE	SCALE	AS SHOWN
	FEB 2022		

COUNTY OF ALAMEDA	PUBLIC WORKS AGENCY
DESIGNED	CHECKED

COUNTY OF ALAMEDA
 THE NEW SIDEWALK CONSTRUCTION ON REDWOOD ROAD AT VARIOUS LOCATIONS
 DRIVEWAY DETAILS

WORK ORDER NO.	R32131
SPECIFICATION NO.	2407
SHEET NO.	4 OF 14
FILE NO.	U-287-20

FOR REDUCED ENGLISH PLANS ORIGINAL SCALE IS IN INCHES

