

E. Lewelling Blvd Improvements from Meekland Ave to Langton Way

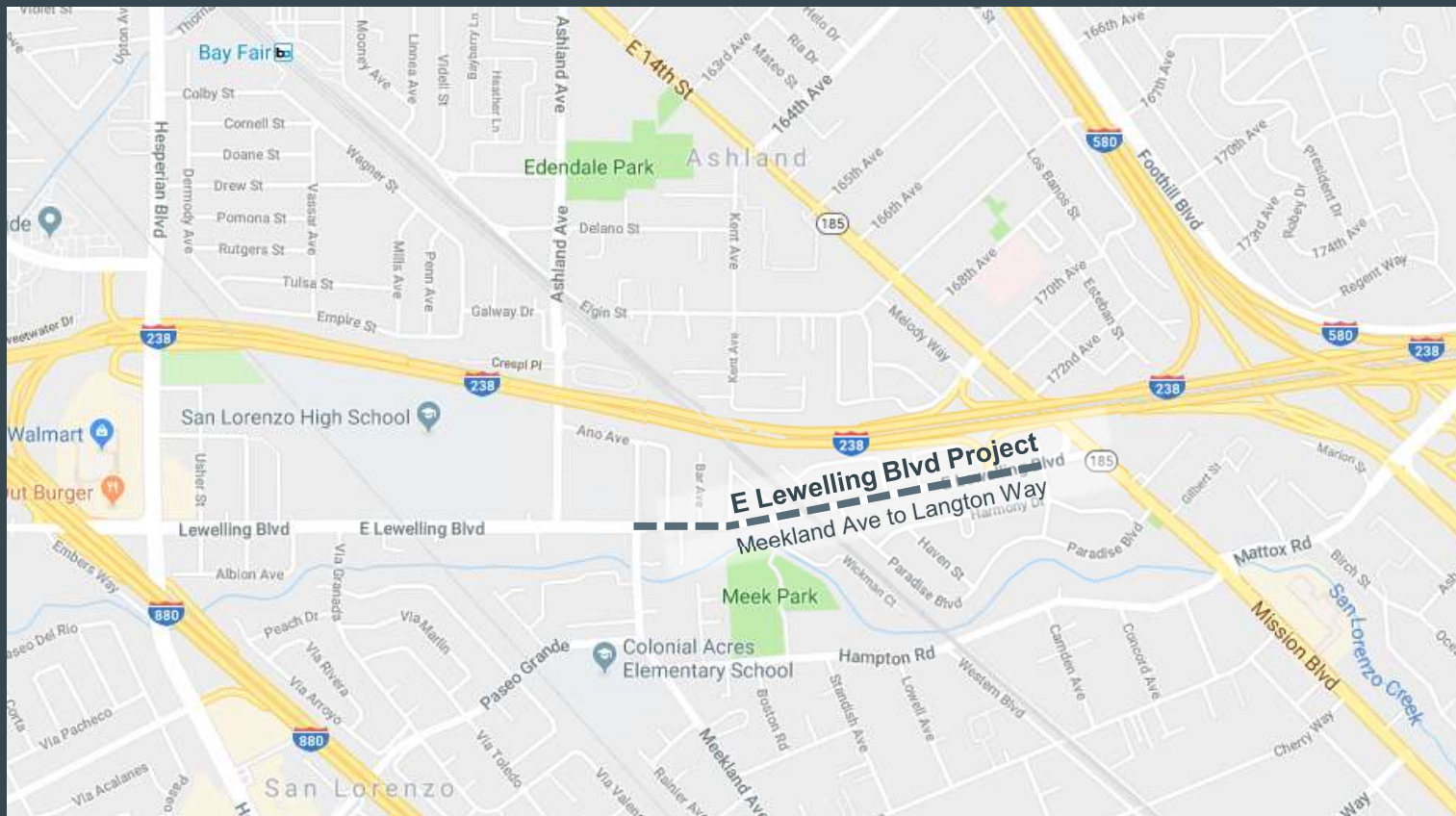


Unincorporated Alameda County Bicycle & Pedestrian Advisory Committee

December 17, 2020

Amber Lo, P.E.
Supervising Civil Engineer





Project Location

Project Features

- Class IV Bike Lane
- New Sidewalk
- Pavement Repair
- Street Crossing Improvements
- Storm Drainage Improvements
- Traffic Calming



Aerial view of E. Lewelling Blvd., looking east

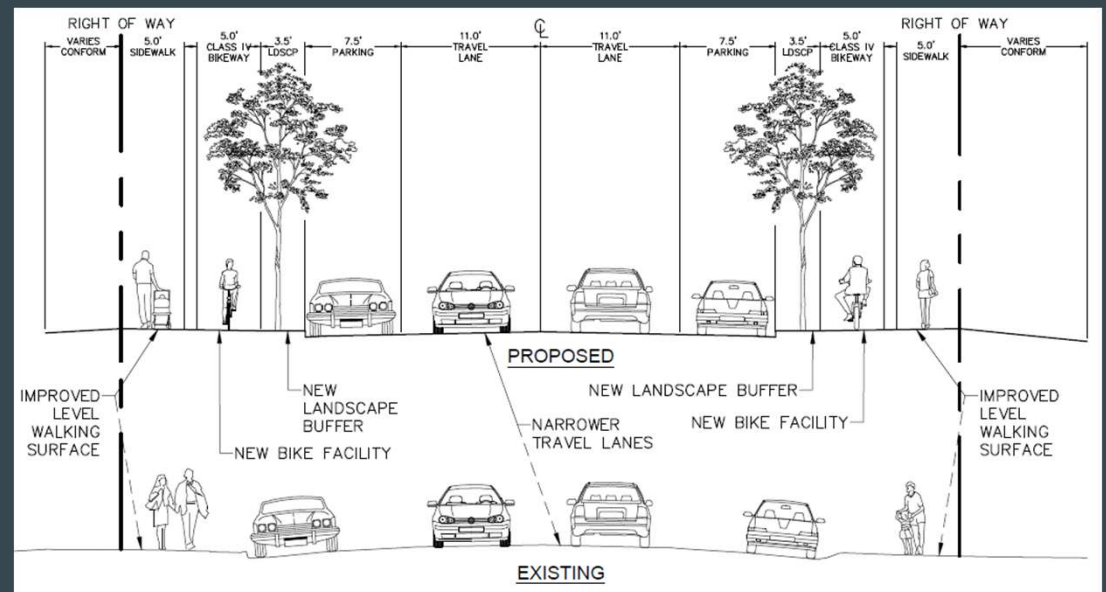
Existing Conditions

- Poor sidewalk condition with gaps
- No bike facility
- Lack of standard parking and driveways
- Ponding water at some locations
- Poor pavement condition
- No walkway across railroad



Bicyclist-Friendly Improvements

- Class IV Bike Lane
- Bicycle & Pedestrian Master Plan – Class II
- Provide connection existing or future bike facilities in network
- “Interested but concerned” bicyclists
 - Curious about bicycling
 - Would like to ride more but are afraid to
 - Would ride if they felt safer



Pedestrian-Friendly Improvements

- Meekland Ave. to Langton Way
- 2019 Bike Ped Master Plan high priority sidewalk project
- Connection to future sidewalk and streetscape improvement projects
- Improve safety and walkability
 - Eliminate parking in pedestrian paths
 - Standardize driveway access
 - Install walkway across the railroad tracks

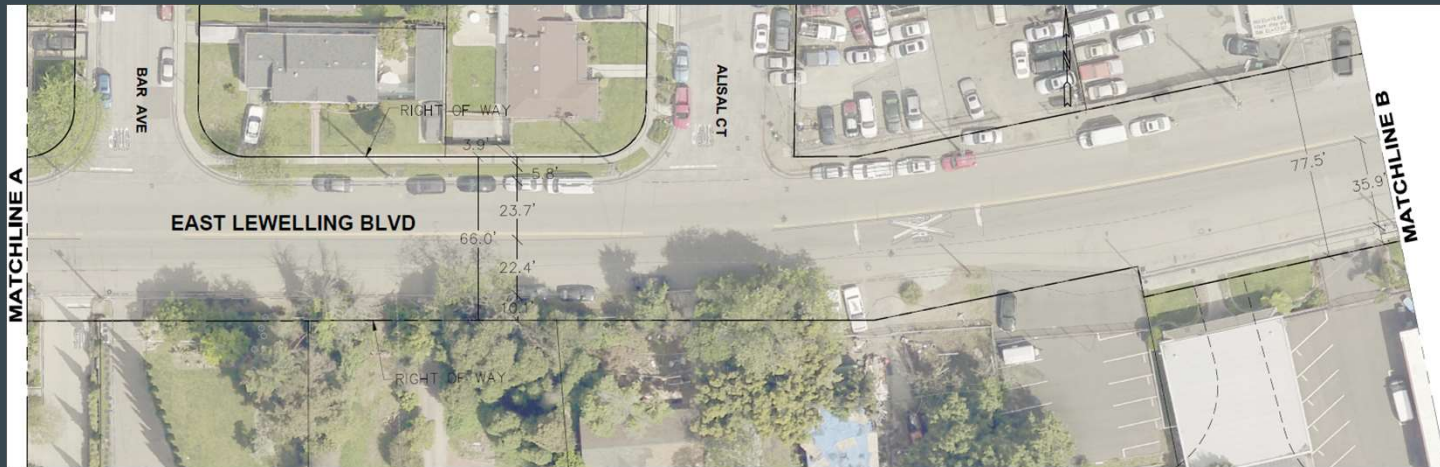
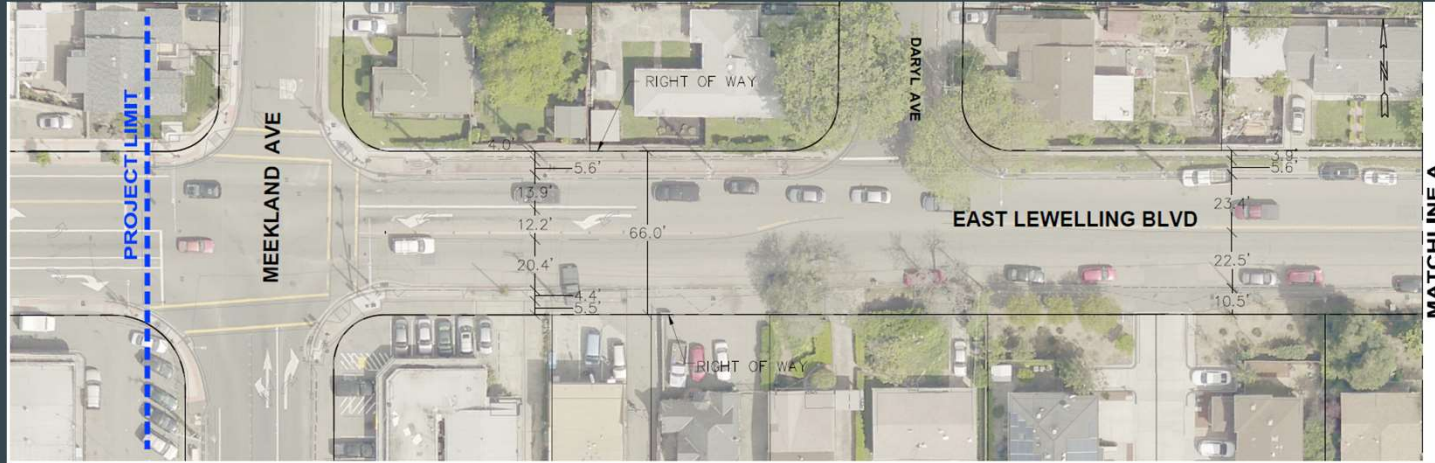


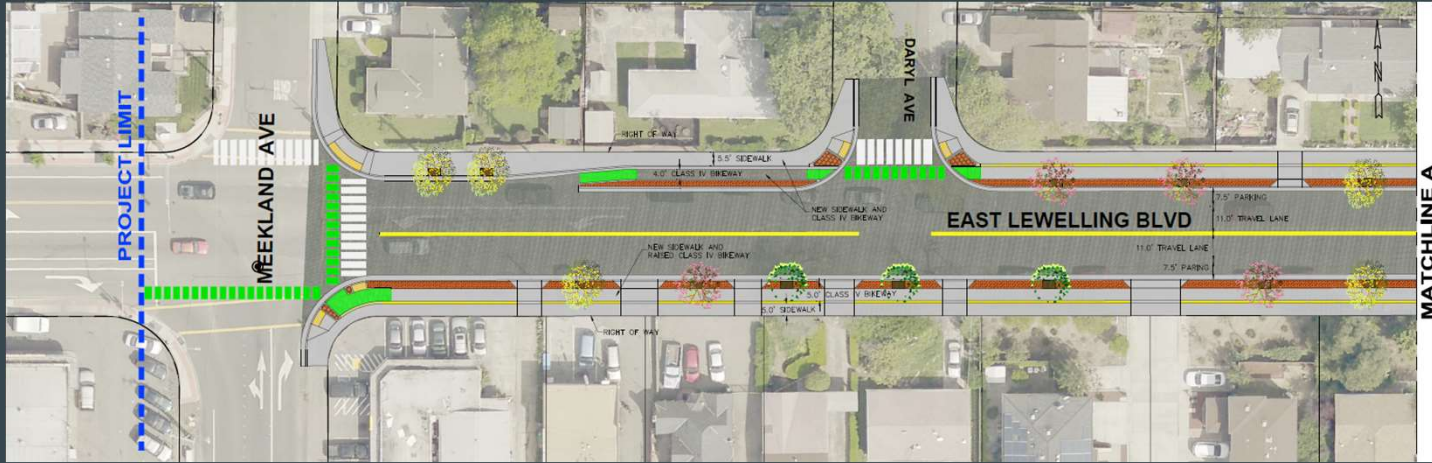
Where are we at right now?

- Design 50% Complete
- Funding application submitted for ATP grant
- Complete design end of 2021



Existing

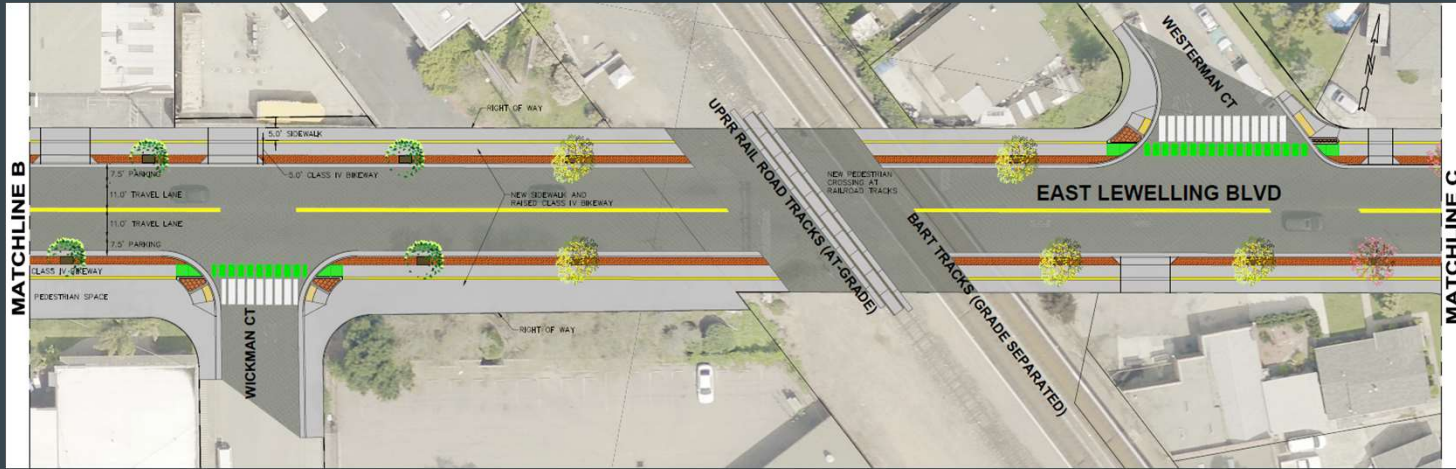




Proposed



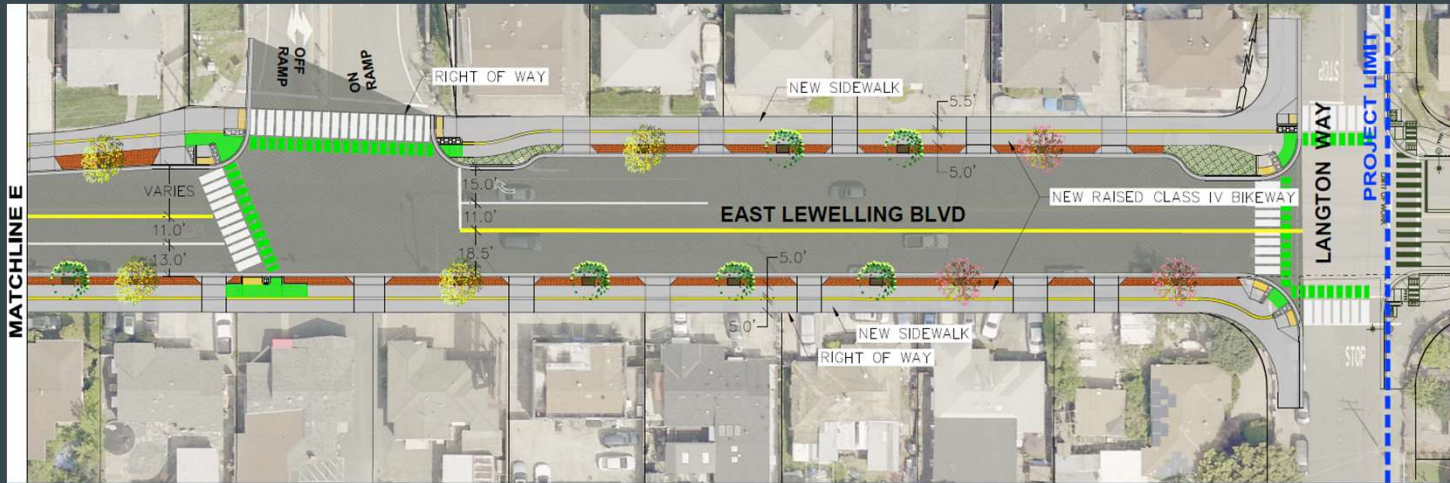
Existing



Proposed

Existing





Proposed

Questions/Feedback



Project Contact Information

Amber Lo, P.E.
Supervising Civil Engineer
Engineering Department
amber@acpwa.org
(510) 670-5485

info@acpwa.org

<https://www.acpwa.org/project-information/east-lewelling-boulevard-improvement-project-1>

